

INSTALLATION INSTRUCTIONS

DESCRIPTION: In Dash Adventure Pro GPS Kit
PART NUMBER: B4J-H21J0-V0
MODEL: 2021+ Wolverine RMax2 and RMax4



⚠ WARNING

Please read and understand these instructions completely before installation to avoid possible injury, or damage to the accessory or vehicle.

NOTICE:

Installation of this kit requires a torque wrench and should be performed by an authorized Yamaha dealer or a qualified mechanic.

WARRANTY INFORMATION:

In the United States, see your Yamaha dealer for a copy of the Yamaha Genuine Parts and Accessories Limited Warranty.

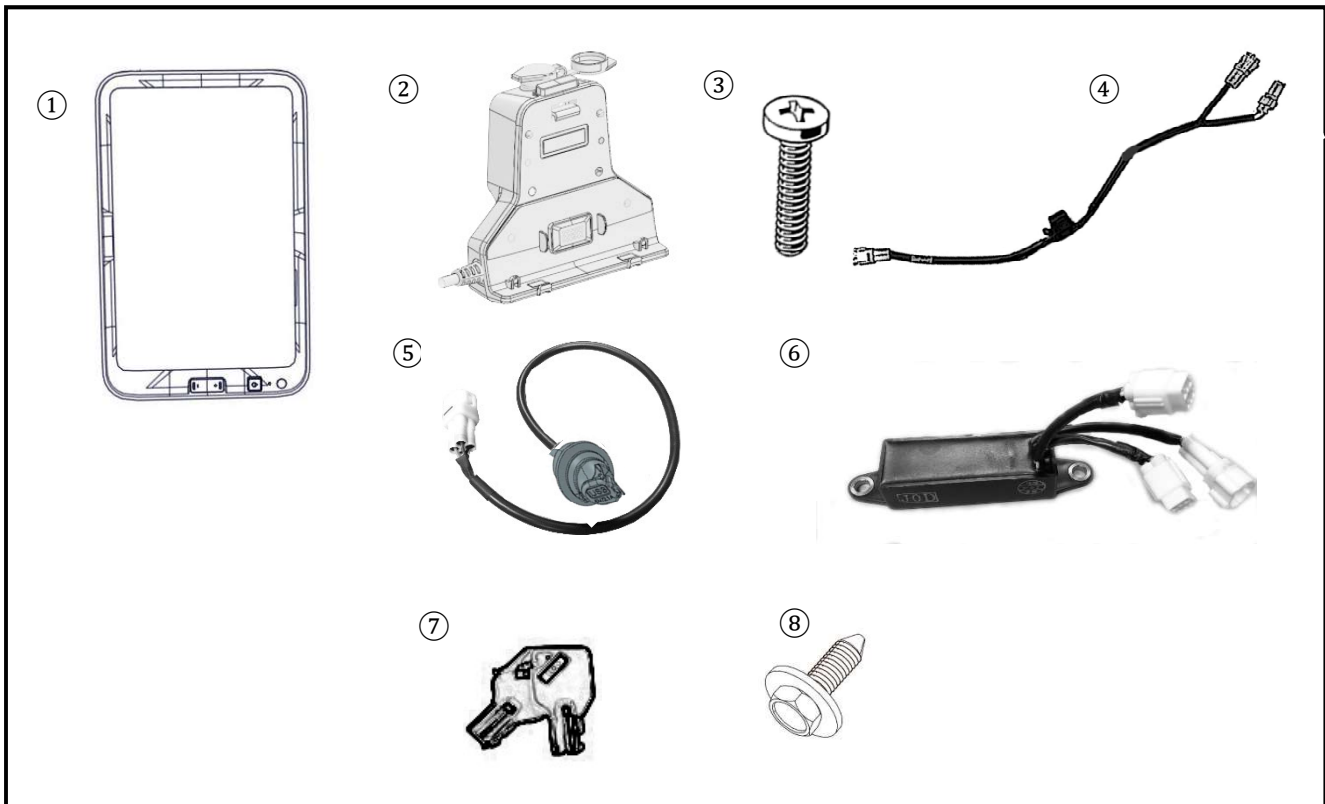
DEALER OR INSTALLER:

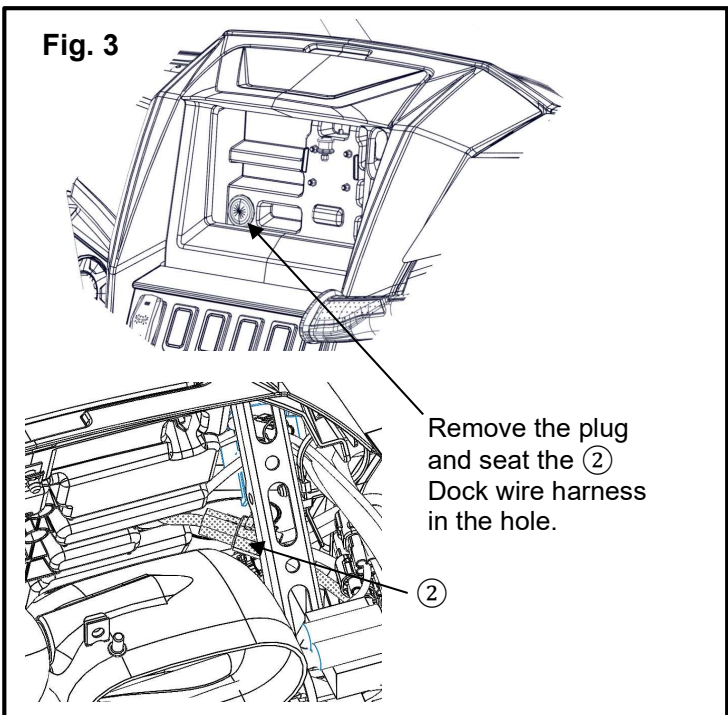
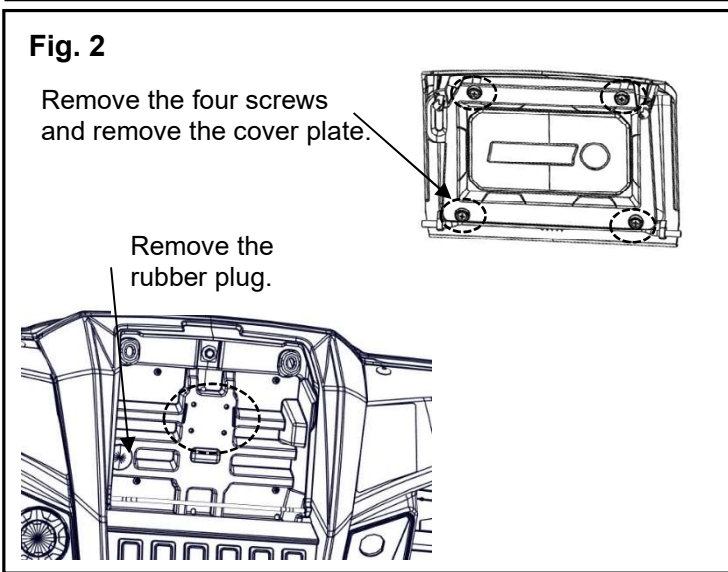
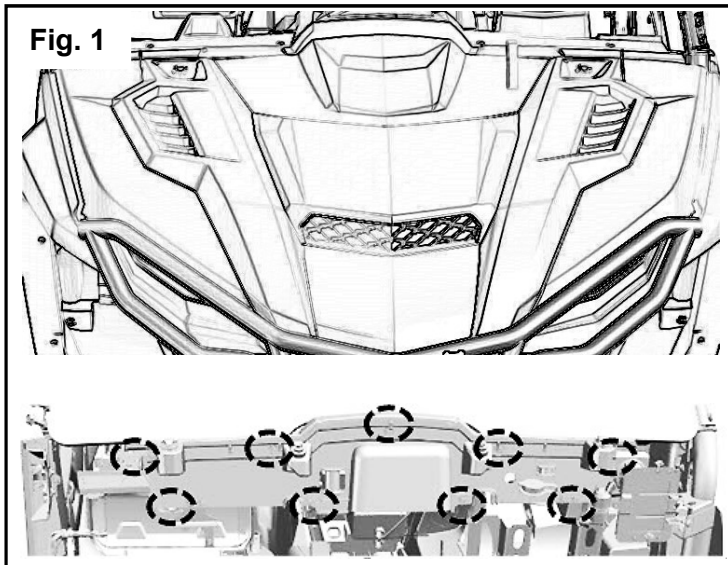
These instructions contain important information for future reference and *must* be given to the customer.

PARTS LIST:

No.	Part Number	Description	Qty
--	B4J-H21J0-V0	In Dash Adventure Pro GPS Kit	--
①	B4J-H357J-00	Display Unit	1
②	B4J-H5335-00	Dock	1
③	B8K-H3358-00	Phillips Screws	4
④	B4J-H2117-00	Wire harness	1
⑤	B4J-H21E2-00	USB Port	1
⑥	B4J-H21E1-02	Power Converter	1
⑦	B4J-F5848-00	Key	2
⑧	JW1-K6179-01	M6 Hex Head Bolt with washer	2

* Part supplied with kit only and not available separately.



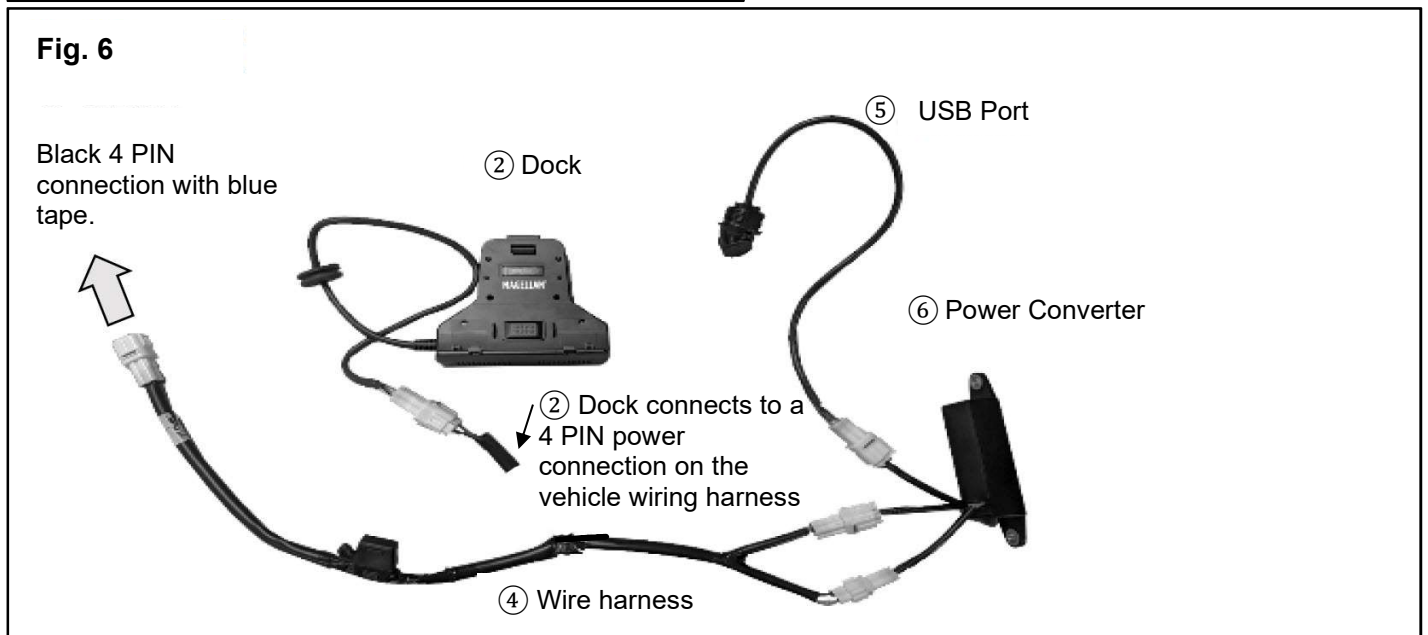
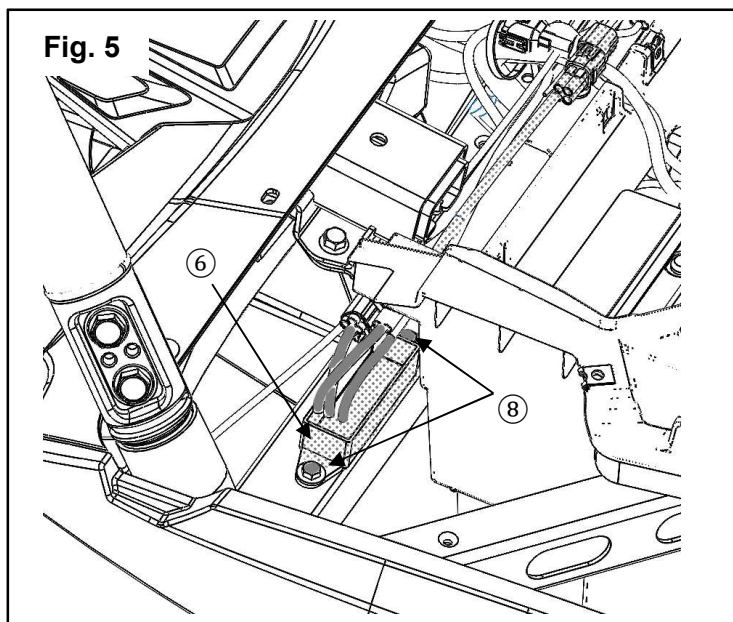
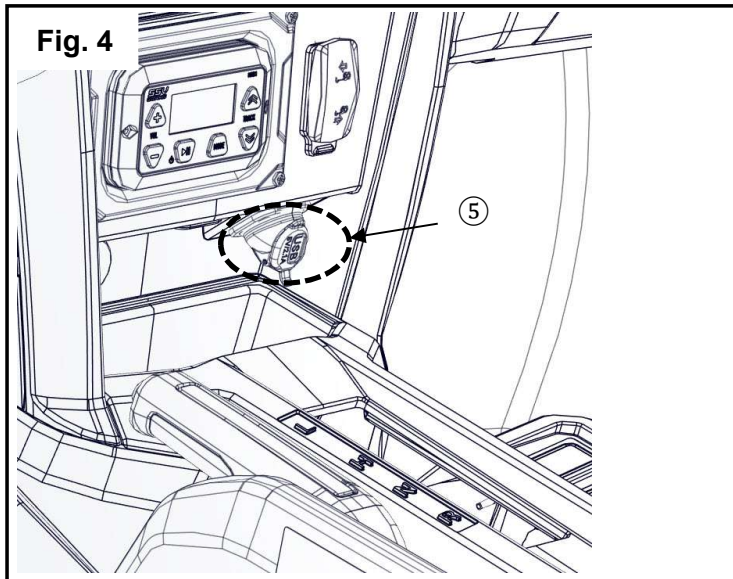


PREPARATION:

- Place the vehicle on a secure and level surface.
- Set the parking brake.
- Clean the mounting surfaces before beginning installation.
- Disconnect the battery.

INSTALLATION:

1. Remove the hood and remove the nine bolts for the inner firewall. Retain the hardware for reuse. (Fig. 1)
2. Disconnect the speed key and set the inner firewall aside.
3. Fold down the GPS cover inside the cab. Remove the four screws and remove the cover plate. (Fig. 2)
4. Remove the rubber access plug. It will not be reused. (Fig. 2)
5. Align the ② Dock mount with the four mounting holes in the GPS dash compartment. (Fig. 2)
6. Thread in the four ③ Phillips screws from the inner firewall side and through the GPS dash compartment and into the ② Dock. (Fig. 3)
7. Route the ② Dock wire harness through the access hole and into the inner fire wall area. Connect it to the vehicle wiring harness 4 PIN power with blue tape wrapped around it. (Fig. 3)
8. Seat the grommet and seal the hole. (Fig. 3)
9. Remove the retaining nut from the ⑤ USB Port.
10. Loosen the center dash and move it upward to make space and attach the ⑤ USB Port.
11. Remove the plug for the USB socket in the center dash and route the ⑤ USB Port into the access hole. (Fig. 4)
12. Thread the retaining nut back on the ⑤ USB Port hand tight.
13. Route the ⑤ USB Port wire to the inner fire wall area and will connect to ⑥ Power Converter in Step 18.
14. Reinstall the center dash.
15. Remove the right-side front fender to create access. Retain the hardware for reinstallation.
16. Install the two ⑧ M6 Hex Head Bolts to form the threads into the frame. Then remove them to make installing the ⑥ Power Converter easier. (Fig. 5)
17. Install the ⑥ Power Converter in the inner fire wall section with two ⑧ M6 Hex Head Bolts (Fig. 5)
18. Locate the black accessory power connector with the blue tape and connect the ④ Wire Harness at the fuse side of the harness. Connect the ⑤ USB Port to the ⑥ Power Converter. (Fig. 6)
19. The other two connections of the ④ Wire Harness will connect to the ⑥ Power Converter. (Fig. 6)



20. Reconnect the battery.
21. Press the power button on the ① Display Unit and check operation.
22. Verify the USB port functions correctly.
23. Reinstall the inner firewall with the stock bolts.
24. Reinstall the right front fender with the stock bolts.
25. Reinstall the hood.
26. ⑦ Keys are used to engage and disengage the lock on the ② Dock. This secures the ① Display Unit to the ② Dock.

MAINTENANCE:

Periodically, check torque on all hardware. If loose hardware is found, re-torque to specification.

CARE AND CLEANING:

Clean painted metal parts with a clean soft cloth and mild soap and water solution. Rinse and dry.

CUSTOMER SERVICE:

For further information see your Yamaha dealer.

ESTIMATED TIME TO INSTALL: 1.0 HRS.